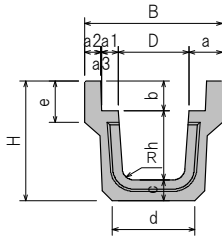
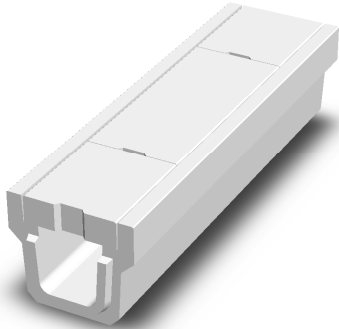
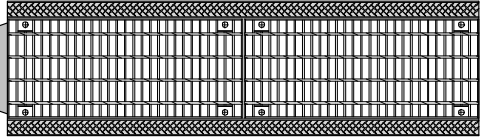
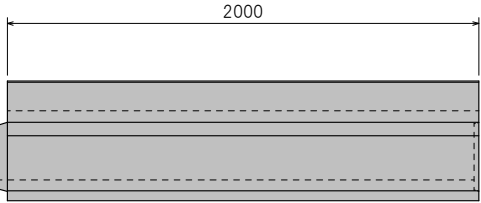
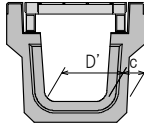


長尺U字溝 KUS・KUR



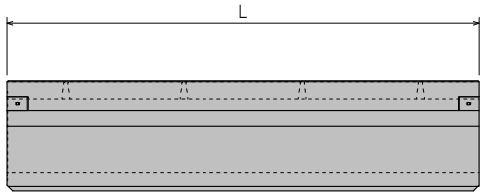
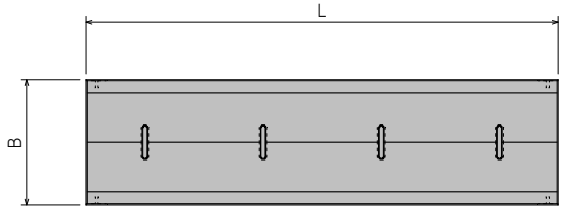
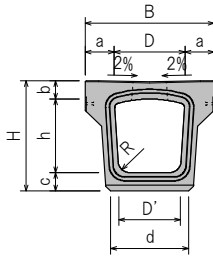
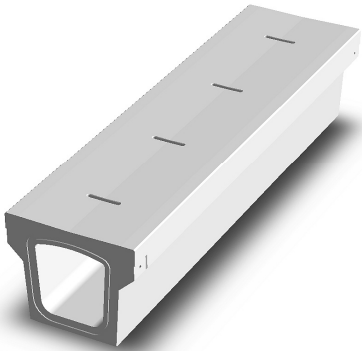
○グレーチングbolt固定タイプ



呼び名	寸法 (mm)														参考重量 (kg)	
	B	H	D	D'	h	a	a1	a2	a3	b	c	d	e	R		
250×250	480	405	250	230	250	115	62	50	3	100	55	270	130	50	297	
KUS	300×300	545	460	300	260	300	122.5	67.5	50	5	100	60	300	130	50	356
	300×400	565	570	300	250	400	132.5	67.5	60	5	100	70	300	134	50	479
	350×350	605	515	350	305	350	127.5	67.5	55	5	100	65	350	132	50	430
	350×400	615	570	350	300	400	132.5	67.5	60	5	100	70	350	134	50	496
	400×400	665	570	400	350	400	132.5	67.5	60	5	100	70	400	134	70	516
KUR	400×500	675	675	400	335	500	137.5	67.5	65	5	100	75	400	136	70	626
	300×300	585	520	300	260	300	142.5	67.5	70	5	130	90	350	180	50	556
	300×400	605	630	300	250	400	152.5	67.5	80	5	130	100	350	184	50	715
	350×350	645	575	350	305	350	147.5	67.5	75	5	130	95	400	182	50	655
	350×400	655	630	350	300	400	152.5	67.5	80	5	130	100	400	184	50	738
400×400	705	630	400	350	400	152.5	67.5	80	5	130	100	450	184	70	766	
400×500	725	740	400	335	500	162.5	67.5	90	5	130	110	450	189	70	951	

※グレーチングbolt固定タイプは受注生産となります。

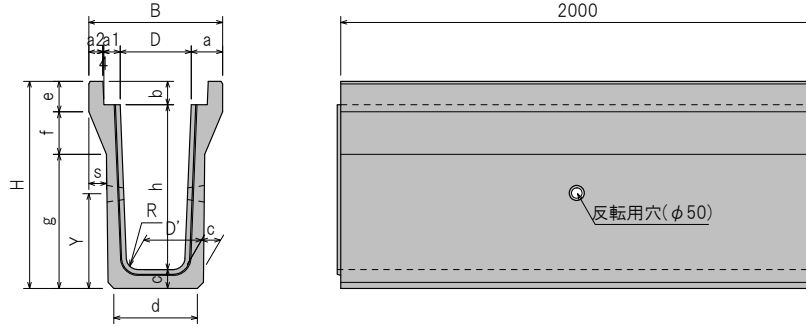
長尺BOX型側溝



呼び名	寸法 (mm)											参考重量 (kg)
	B	H	D	D'	h	a	L	b	c	d	R	
KUB 300×300	545	480	300	260	320	122.5	1998	80	80	330	50	599
KUB 400×400	665	580	400	350	420	132.5	1998	80	80	418	70	759



深溝U字溝 KDS・KDR

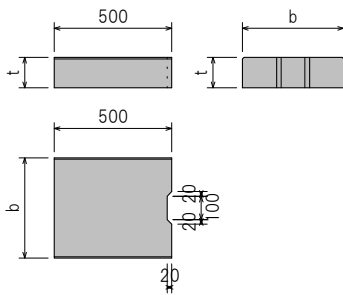


呼び名	寸法 (mm)																	参考重量 (kg)	
	B	H	D	D'	h	d	a	a1	a2	b	c	e	f	g	s	R	Y		
K	300×500	565	675	300	260	500	359	132.5	68.5	60	100	75	130	180	365	75	50	304	598
	300×600	565	775	300	252	600	350	132.5	68.5	60	100	75	130	180	465	75	50	355	663
	300×700	565	880	300	244	700	352	132.5	68.5	60	100	80	130	180	570	75	50	402	755
	300×800	565	985	300	236	800	355	132.5	68.5	60	100	85	130	180	675	75	50	448	852
	300×900	565	1090	300	228	900	357	132.5	68.5	60	100	90	130	180	780	75	50	492	951
D	300×1000	565	1195	300	220	1000	359	132.5	68.5	60	100	95	130	180	885	75	50	536	1057
	400×600	675	775	400	352	600	448	137.5	68.5	65	100	75	130	180	465	75	70	343	725
	400×700	675	880	400	344	700	451	137.5	68.5	65	100	80	130	180	570	75	70	390	822
	400×800	675	985	400	336	800	453	137.5	68.5	65	100	85	130	180	675	75	70	435	923
	400×900	675	1090	400	328	900	456	137.5	68.5	65	100	90	130	180	780	75	70	479	1027
S	400×1000	675	1195	400	320	1000	458	137.5	68.5	65	100	95	130	180	885	75	70	523	1139
	300×500	605	740	300	260	500	428	152.5	68.5	80	130	110	170	170	400	65	50	321	892
	300×600	605	840	300	252	600	421	152.5	68.5	80	130	110	170	170	500	65	50	370	979
	300×700	605	940	300	244	700	412	152.5	68.5	80	130	110	170	170	600	65	50	420	1073
	300×800	605	1040	300	236	800	402	152.5	68.5	80	130	110	170	170	700	65	50	470	1172
	300×900	605	1145	300	228	900	405	152.5	68.5	80	130	115	170	170	805	65	50	517	1304
	300×1000	605	1250	300	220	1000	419	152.5	68.5	80	130	120	170	170	915	65	50	559	1470
	400×600	725	840	400	352	600	516	162.5	68.5	90	130	110	170	170	500	65	70	363	1082
	400×700	725	940	400	344	700	507	162.5	68.5	90	130	110	170	170	600	65	70	413	1182
	400×800	725	1040	400	336	800	499	162.5	68.5	90	130	110	170	170	700	65	70	462	1285
	400×900	725	1145	400	328	900	502	162.5	68.5	90	130	115	170	170	805	65	70	509	1425
	400×1000	725	1250	400	320	1000	516	162.5	68.5	90	130	120	170	170	915	65	70	552	1600

※グレーチングボルト固定タイプも製造可能です。(受注生産)



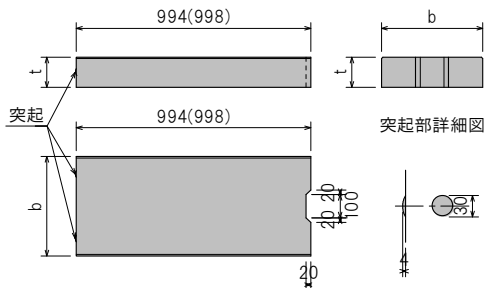
側溝用ふた



呼び名	寸法 (mm)		参考重量 (kg)
	b	t	
250用	370	100	43
IS 300	430	100	51
IS 350	480	100	57
IS 400	530	100	63
IS 450	580	120	83
IS 500	630	120	90
IR 300	430	130	67
IR 350	480	130	75
IR 400	530	130	83
IR 450	580	150	104
IR 500	630	150	113

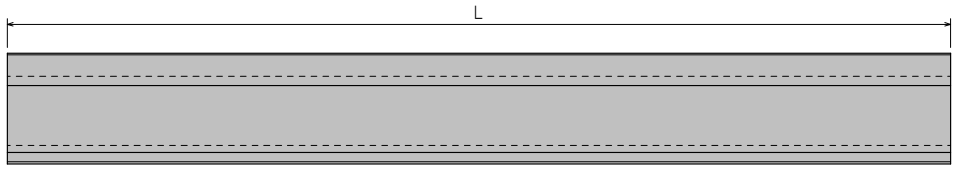
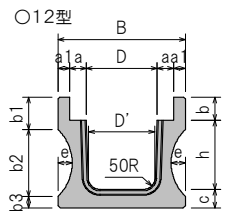
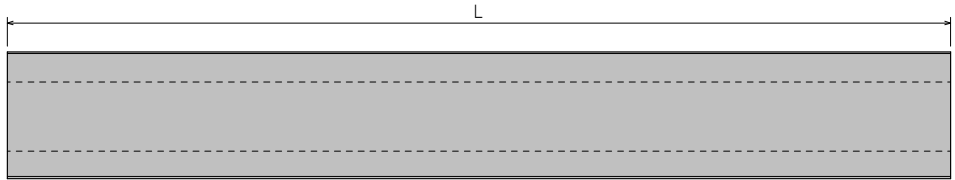
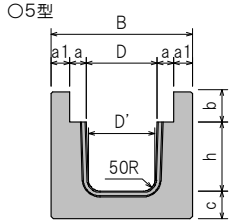
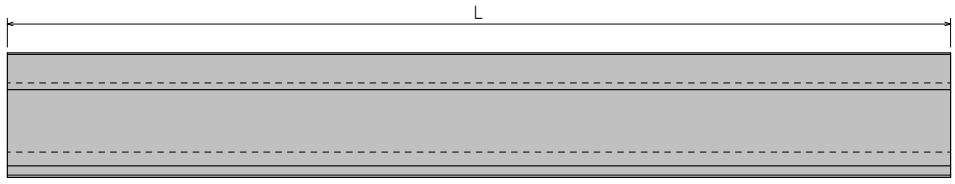
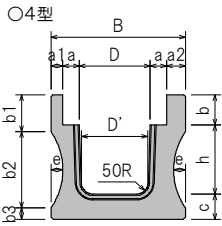


側溝用ふた

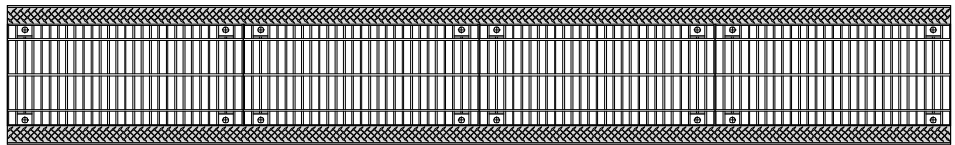
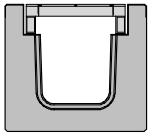


呼び名	寸法 (mm)		参考重量 (kg)
	b	t	
250用	370	100	87
ISL 300	430	100	101
ISL 350	480	100	113
ISL 400	530	100	125
ISL 450	580	120	163
ISL 500	630	120	177
IRL 300	430	130	132
IRL 350	480	130	148
IRL 400	530	130	163
IRL 450	580	150	205
IRL 500	630	150	222

ロングU字溝

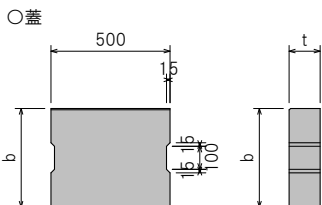


○グレーチングボルト固定タイプ



呼び名	寸法 (mm)														参考重量 (kg)	
	B	D	D'	h	a	a1	a2	b	b1	b2	b3	c	e	L		
4型	300×300	570	300	280	300	70	50	80	130	160	330	50	110	50	4000	1320
	300×400	570	300	280	400	70	50	80	130	170	420	50	110	50	4000	1520
	300×500	570	300	280	500	70	50	80	130	190	500	50	110	50	4000	1730
	400×400	670	400	380	400	70	50	80	130	170	420	50	110	50	4000	1620
	400×500	670	400	380	500	70	50	80	130	180	510	50	110	50	4000	1830
	500×500	770	500	480	500	70	50	80	150	190	520	50	120	50	4000	2020
	500×600	770	500	470	600	70	50	80	150	190	640	50	130	50	3000	1750
5型	300×300	600	300	280	300	70	80	—	130	—	—	—	120	—	4000	1780
	300×400	600	300	280	400	70	80	—	130	—	—	—	120	—	4000	2073
	300×500	600	300	280	500	70	80	—	130	—	—	—	120	—	4000	2370
	400×400	700	400	380	400	70	80	—	130	—	—	—	120	—	4000	2188
	400×500	700	400	380	500	70	80	—	130	—	—	—	120	—	3000	1860
	500×500	800	500	480	500	70	80	—	150	—	—	—	120	—	3000	1970
12型	300×300	540	300	280	300	70	50	—	100	140	290	50	80	60	4000	943
	300×400	540	300	280	400	70	50	—	100	140	390	50	80	60	4000	1120
	300×500	540	300	280	500	70	50	—	100	140	490	70	100	50	4000	1440
	400×400	640	400	380	400	70	50	—	100	140	390	70	100	60	4000	1310
	400×500	640	400	380	500	70	50	—	100	140	490	70	100	50	4000	1530
	500×500	740	500	480	500	70	50	—	120	160	490	70	100	50	4000	1640
	500×600	800	500	470	600	70	80	—	120	120	630	90	120	60	3000	1750

※グレーチングボルト固定タイプは受注生産となります。

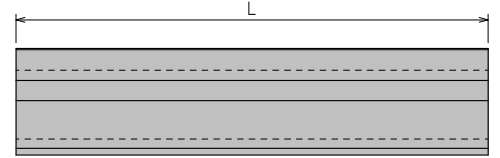
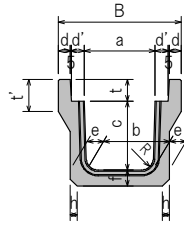


呼び名	寸法 (mm)		参考重量 (kg)	
	b	t		
歩道用	C <sub>3</sub> B-300	430	100	51
	C <sub>3</sub> B-400	530	100	62
	C <sub>3</sub> B-500	630	120	88

呼び名	寸法 (mm)		参考重量 (kg)	
	b	t		
車道用	C <sub>3</sub> B-300	430	130	65
	C <sub>3</sub> B-400	530	130	81
	C <sub>3</sub> B-500	630	150	111

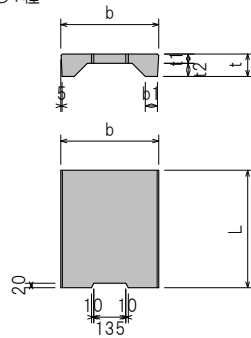


落ちふた式U形側溝(PU, PC)

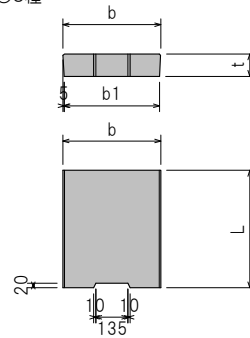


種類	呼び名	寸法 (mm)													参考重量 (kg)
		B	a	b	c	d	d'	e	f	h	t	t'	R	L	
1種	300A	500	300	280	300	40	55	60	60	20	95	120	50	2000	346
	300B	500	300	270	400	40	55	65	65	20	95	120	50	2000	416
	300C	500	300	260	500	40	55	70	70	20	95	120	50	2000	496
	400A	600	400	370	400	40	55	65	65	20	110	135	50	2000	451
	400B	600	400	360	500	40	55	70	70	20	110	135	50	2000	531
	400C	600	400	350	600	40	55	75	75	20	110	135	50	2000	598
	500A	720	500	460	500	45	60	70	70	20	125	150	50	2000	576
	500B	720	500	450	600	45	60	75	75	20	125	150	50	2000	666
3種	300A	520	300	280	300	50	55	70	70	30	95	140	50	2000	416
	300B	520	300	270	400	50	55	70	70	40	95	140	50	2000	468
	300C	520	300	260	500	50	55	80	80	40	95	140	50	2000	581
	400A	630	400	370	400	55	55	70	70	40	110	140	50	2000	505
	400B	630	400	360	500	55	55	80	80	40	110	140	50	2000	626
	400C	630	400	350	600	55	55	90	90	40	110	140	50	2000	747
	500A	750	500	460	500	60	60	80	80	40	125	155	50	2000	685
	500B	750	500	450	600	60	60	90	90	40	125	175	50	2000	835
500C	750	500	450	700	60	60	90	90	40	125	175	50	2000	902	

○1種

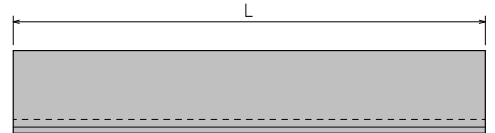
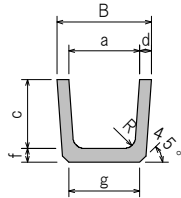
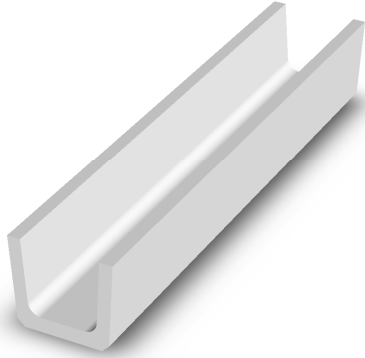


○3種



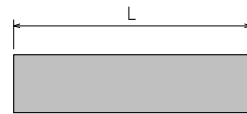
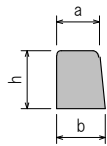
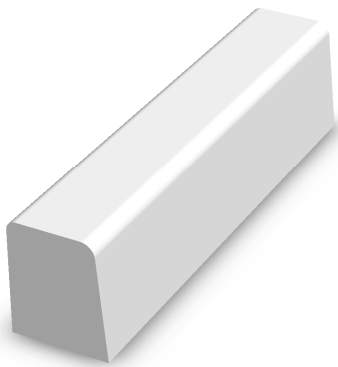
種類	呼び名	寸法 (mm)						参考重量 (kg)
		b	b1	t	t1	t2	L	
1種	300	412	51	95	55	40	500	33
	400	512	51	110	65	45	500	47
	500	622	56	125	75	50	500	65
3種	300	412	402	95	—	—	500	45
	400	512	502	110	—	—	500	65
	500	622	612	125	—	—	500	91

 上ぶた式U形側溝



種類	呼び名	寸法 (mm)										参考重量 (kg)
		B	a	b	c	d	e	f	g	R	L	
1種	300B	400	300	260	300	50	60	60	300	50	2000	263
2種	300B	400	300	260	300	50	60	60	300	50	2000	263

 片面歩車道境界ブロック

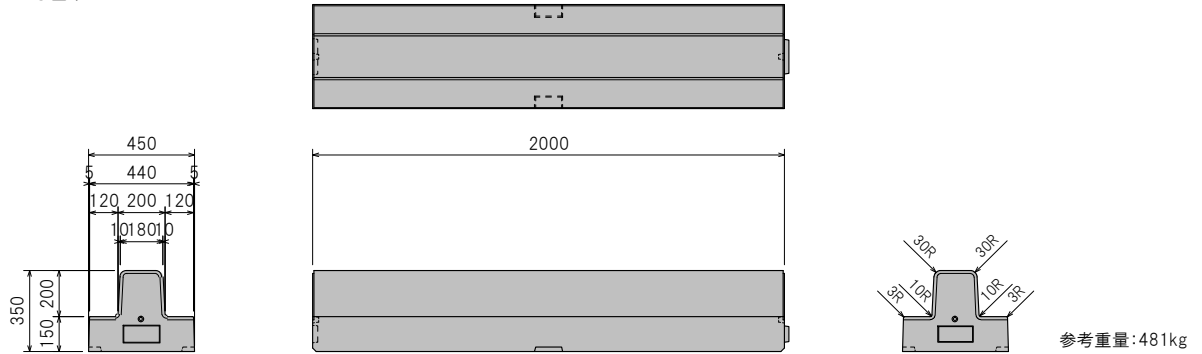


種類・略号・呼び	寸法 (mm)						参考重量 (kg)
	a	b	h	R	R'	L	
片面歩車道境界ブロック片B	180	205	250	30	20	1000	110

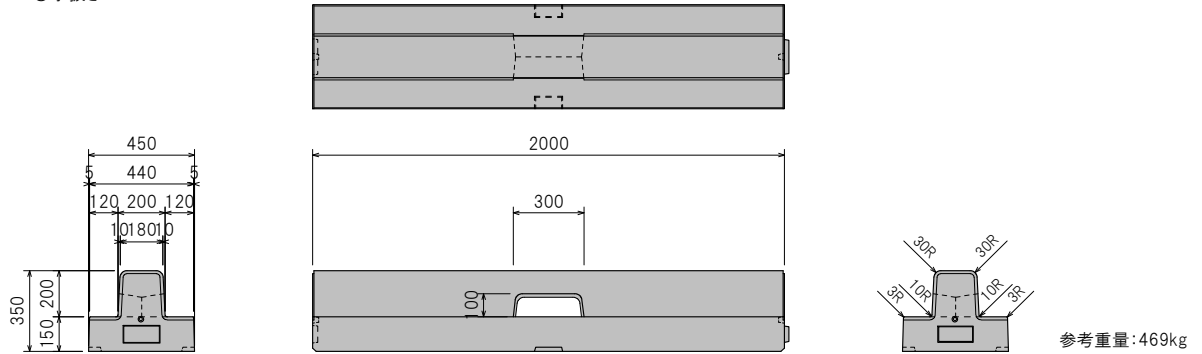


基礎付歩車道境界ブロックLB

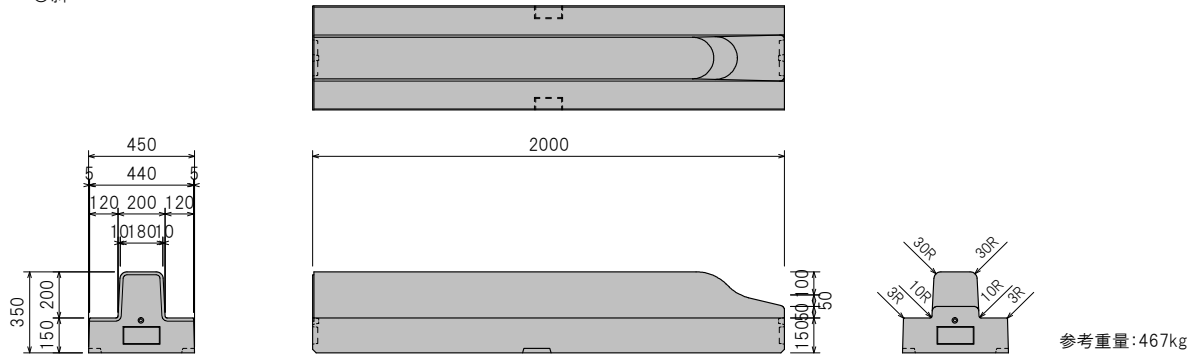
○基本



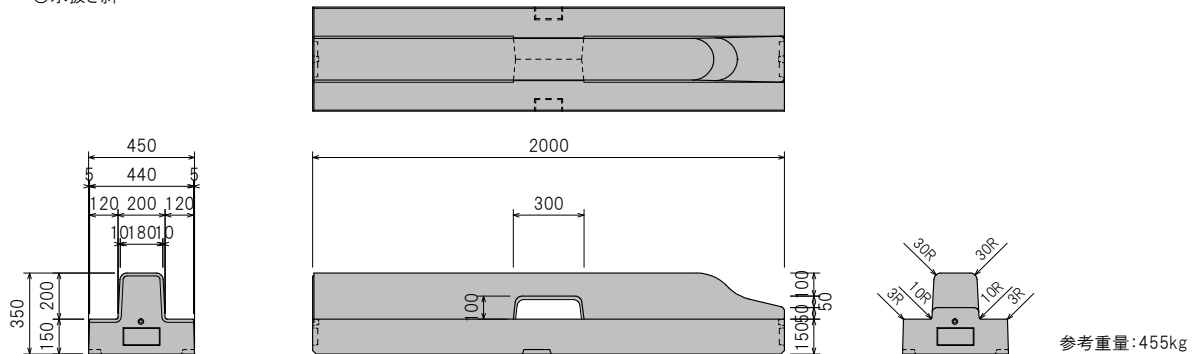
○水抜き



○斜

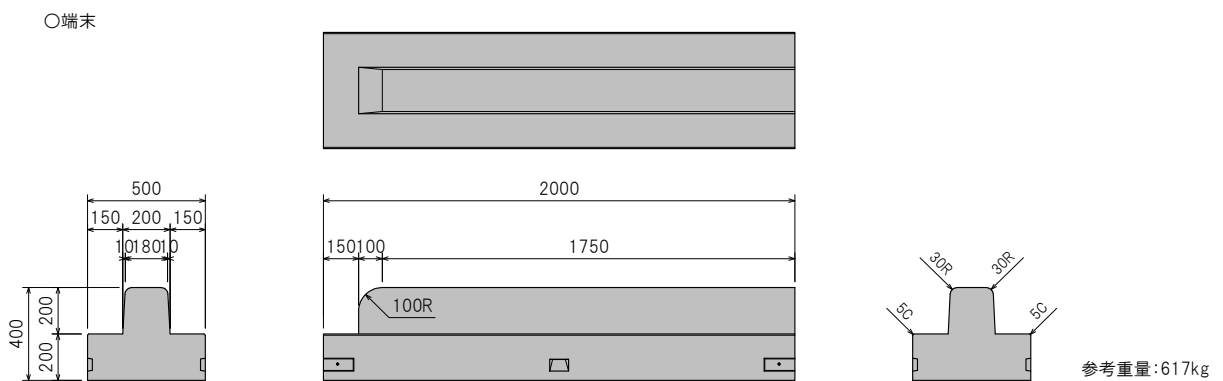
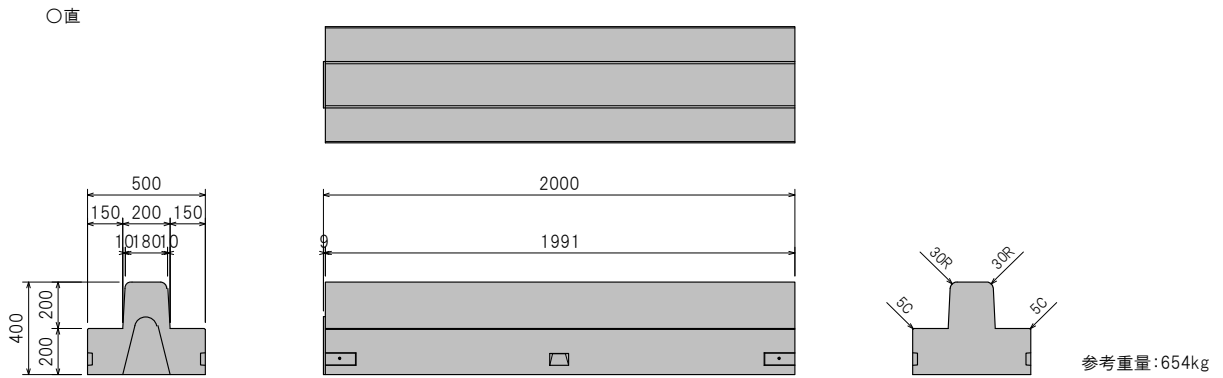


○水抜き斜

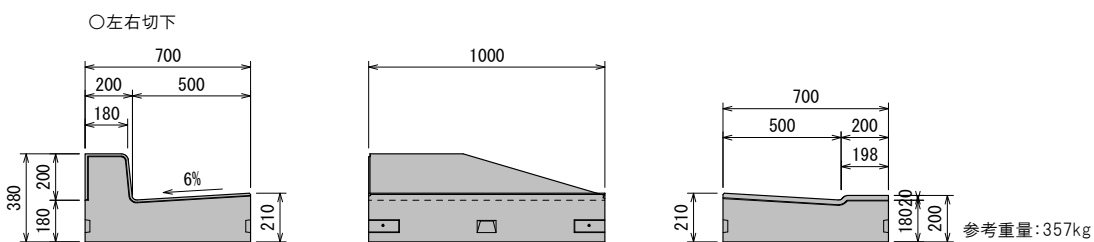
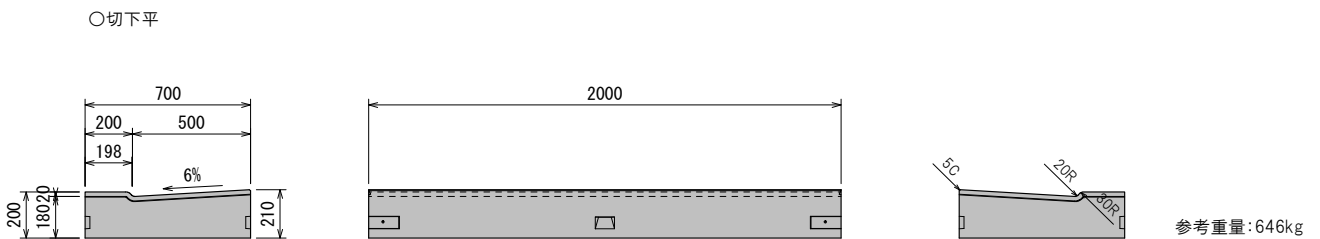
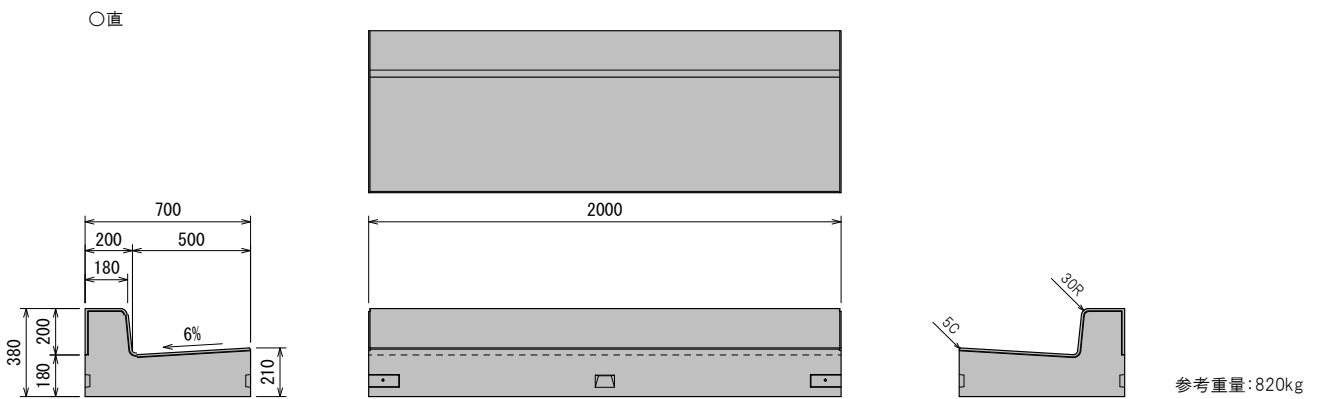




## C型エプロン両面R



## C型エプロンマウンドアップ

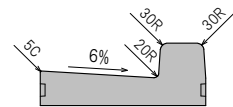
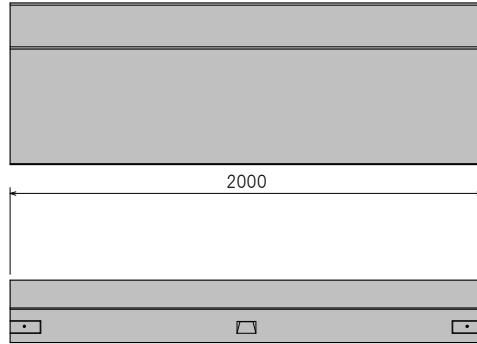
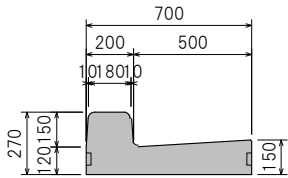


※水抜きタイプ、セミフラット水抜きタイプ、ブロック両面Rタイプも製造可能です。



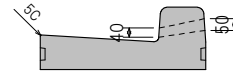
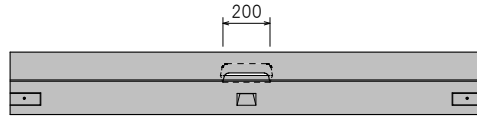
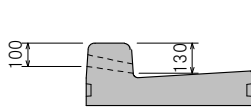
L型街渠ブロック

○標準



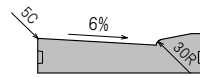
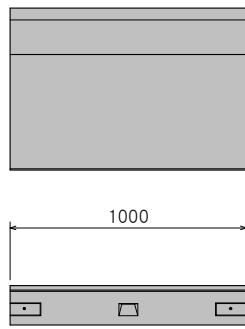
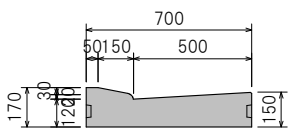
参考重量:563kg

○水抜



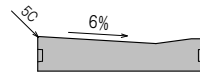
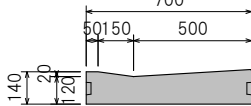
参考重量:559kg

○乗入れA



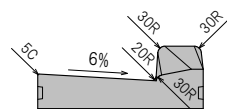
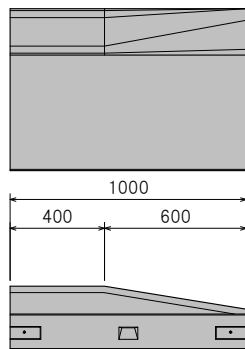
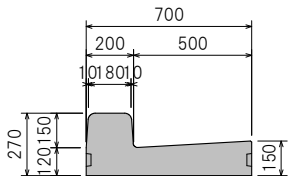
参考重量:233kg

○乗入れC



参考重量:221kg

○切下げA

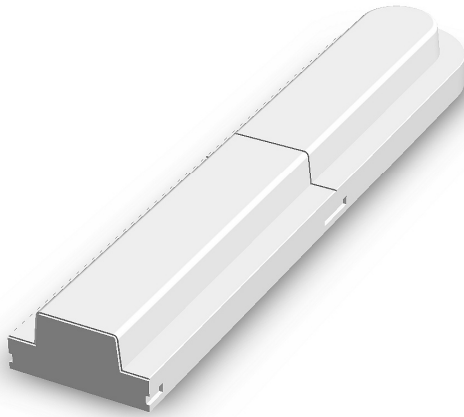


参考重量:267kg

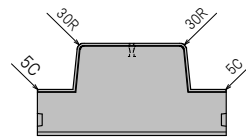
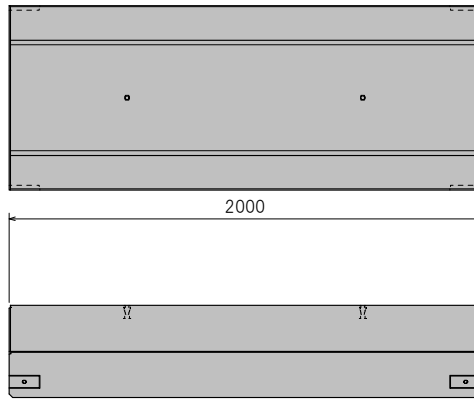
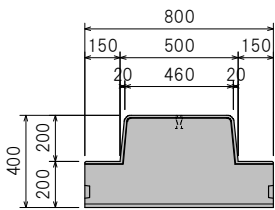




基礎付センターブロック(ブロック高200)

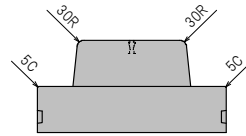
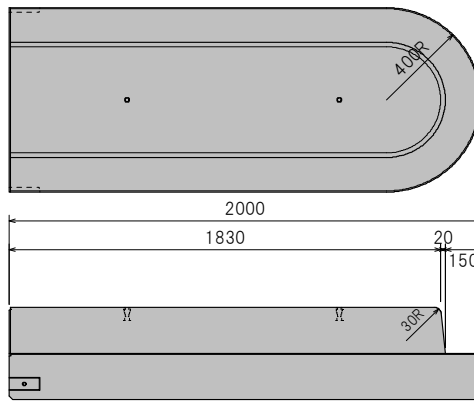
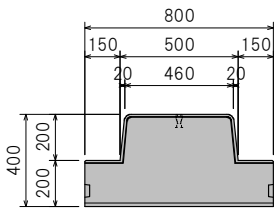


○標準



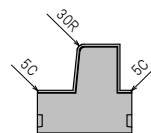
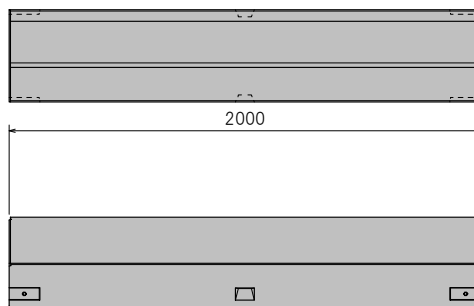
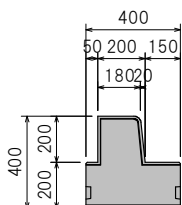
参考重量:1175kg

○端末



参考重量:1097kg

○シフト分割タイプ

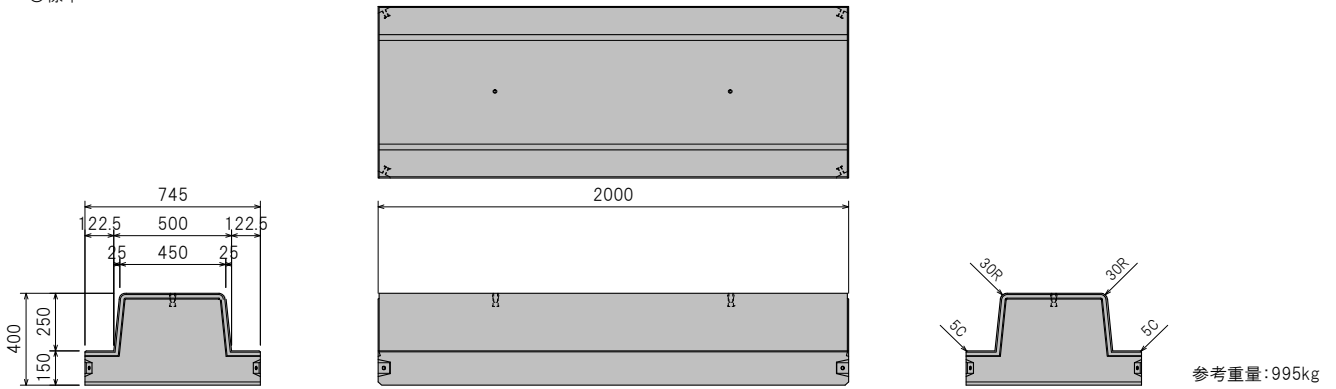


参考重量:541kg

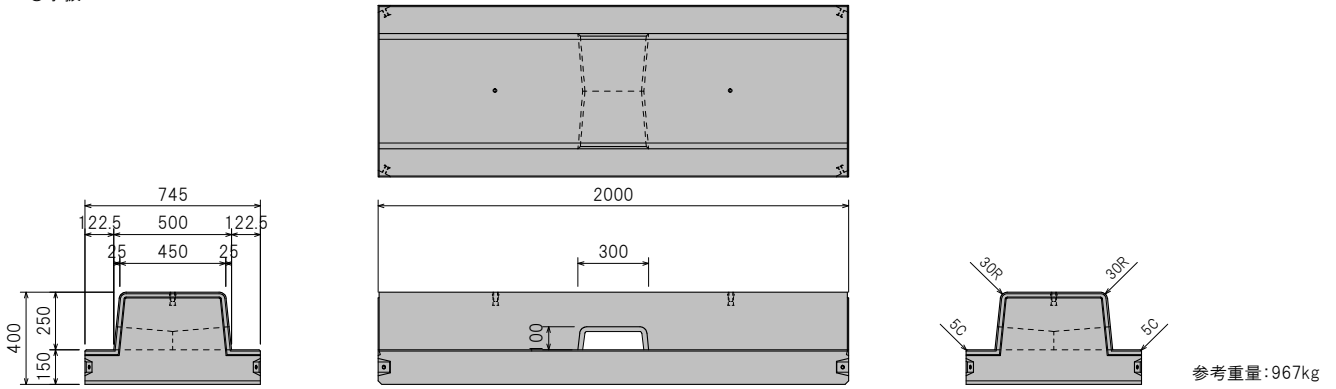


基礎付センターブロック(ブロック高250)

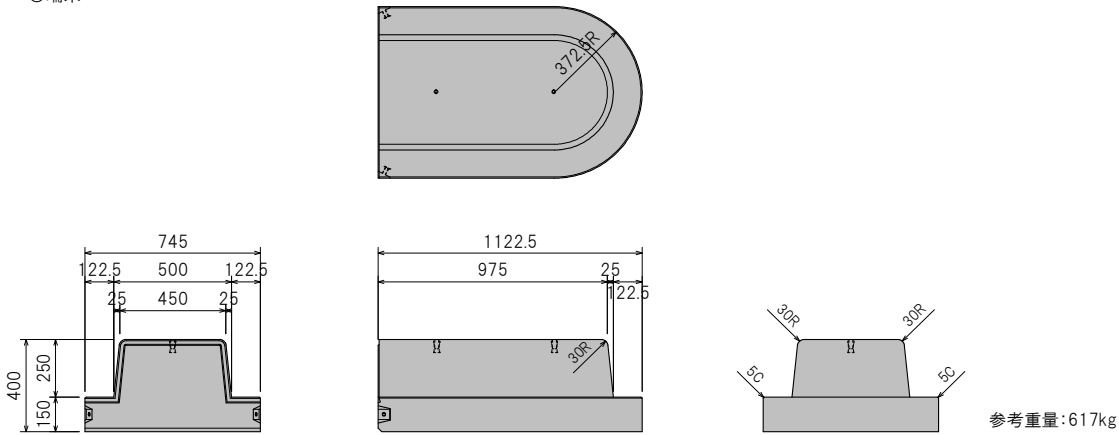
○標準



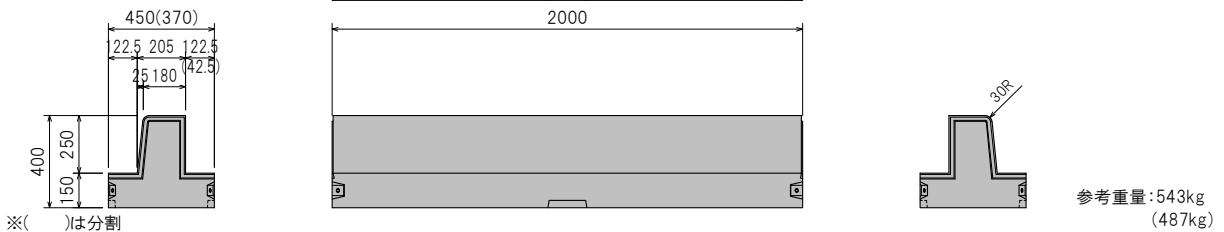
○水抜



○端末



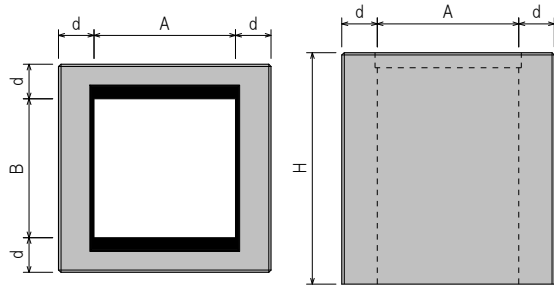
○シフト分割タイプ 標準 (分割)



※( )は分割



集水柵



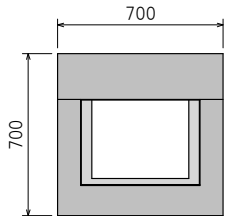
呼び名	寸法 (mm)			
	A	B	d	H
400×400	400	400	150	400~750
500×500	500	500	150	500~1200
600×600	600	600	150	600~1200
800×800	800	800	150	800~1500
1000×1000	1000	1000	200	1000~1800

※グレーチングに関しては、各種対応が可能です。



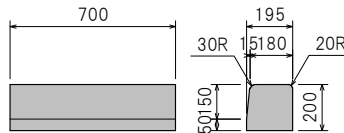
街渠柵

縁塊 -標準Ⅱ型-

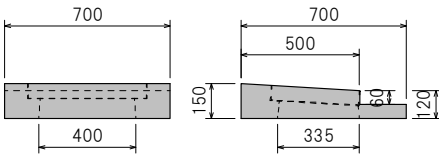


参考重量:83kg

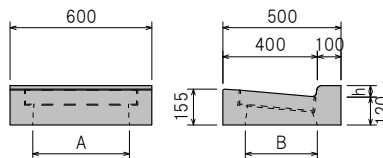
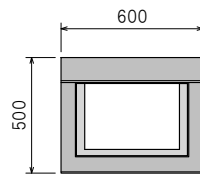
境界ブロック -標準Ⅱ型用-



参考重量:64kg



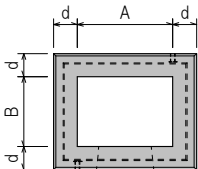
縁塊 -低-



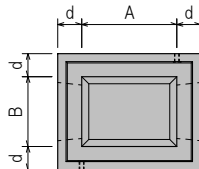
呼び名	寸法 (mm)		参考重量 (kg)
	A	B	
縁塊-低- h=50	410	305	60

※グレーチングに関しては、各種対応が可能です。

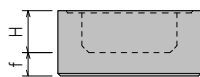
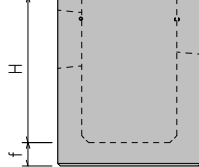
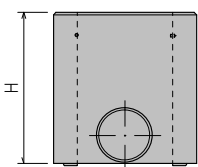
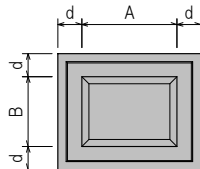
側塊



底塊



底塊(低)



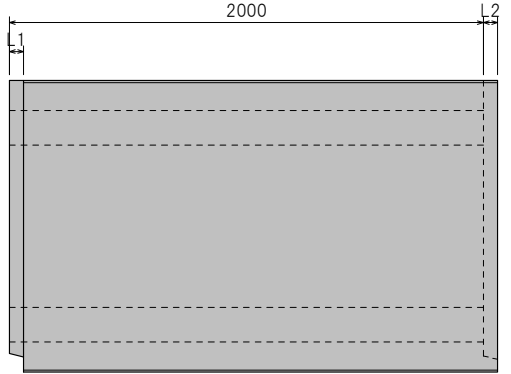
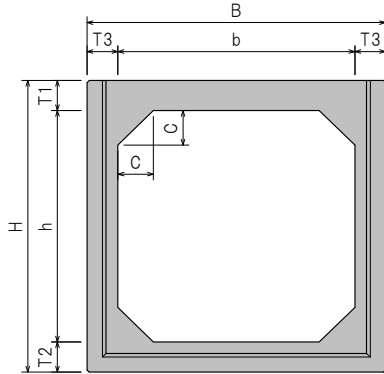
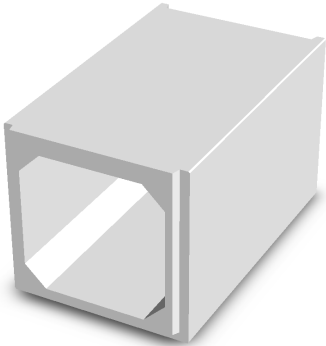
呼び名	寸法 (mm)						参考重量 (kg)
	A	B	H	d	f		
側塊	400×300	400	300	650	100	—	302
	400×300	400	300	670	100	—	310
底塊	400×300	400	300	630	100	100	300
	400×300	400	300	655	100	100	318
底塊(低)	400×300	400	300	160	100	100	125
側塊	400×400	400	400	715	150	—	554
底塊	400×400	400	400	615	150	150	636
底塊(低)	400×400	400	400	115	150	150	265

ボックスカルバート

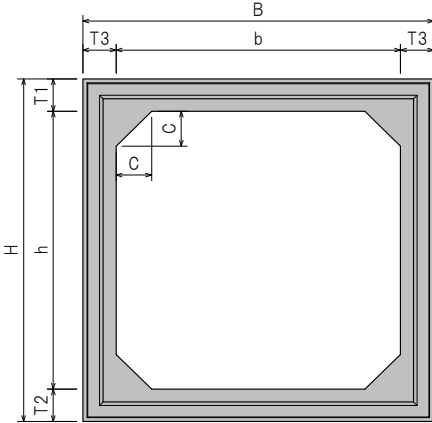
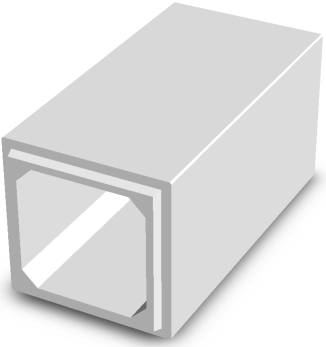
輪荷重 T-25  
横断

土被り 0.2~3.0m

○900×900, 1000×1000, 1500×1500



○上記のサイズ以外

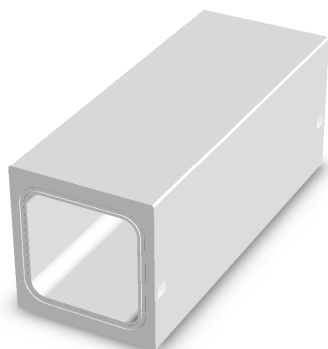


呼び名	寸法 (mm)										参考重量 (kg)
	B	H	b	h	T1	T2	T3	C	L1	L2	
600×900	840	1140	600	900	120	120	120	100	60	60	2190
900×600	1140	840	900	600	120	120	120	100	60	60	2190
900×900	1160	1160	900	900	130	130	130	100	60	40	2666
1000×800	1240	1040	1000	800	120	120	120	150	60	60	2670
1000×1000	1260	1260	1000	1000	130	130	130	150	60	60	3036
1200×800	1480	1080	1200	800	140	140	140	150	60	60	3420
1200×1000	1480	1280	1200	1000	140	140	140	150	60	60	3700
1200×1200	1480	1480	1200	1200	140	140	140	150	60	60	3980
1300×1300	1560	1580	1300	1300	140	140	130	150	60	60	4100
1400×1400	1660	1700	1400	1400	150	150	130	150	60	60	4540
1500×1000	1780	1320	1500	1000	160	160	140	150	60	60	4470
1500×1200	1780	1520	1500	1200	160	160	140	150	60	60	4750
1500×1500	1780	1820	1500	1500	160	160	140	150	60	60	5170

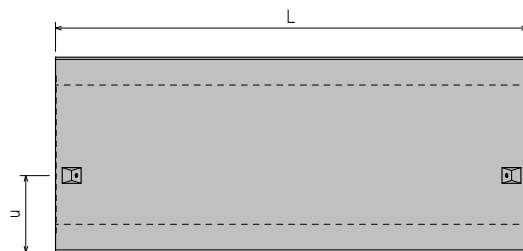
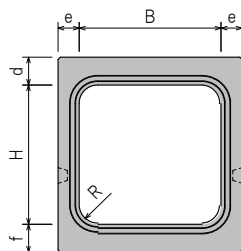


横断ボックス

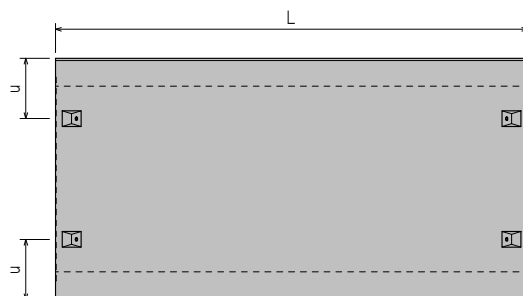
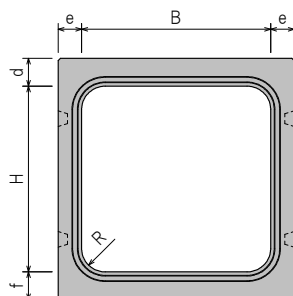
軸荷重	T-25	土被り	0.0~2.0m
横断			



○内幅250~600



○内幅700~1000



呼び名	寸法 (mm)								参考重量 (kg)
	B	H	L	d	e	f	R	u	
250×250	250	250	2000	70	50	70	50	150	365
300×300	300	300	2000	80	60	80	60	180	510
300×400	300	400	2000	80	60	80	60	220	568
350×350	350	350	2000	95	65	95	60	210	671
400×400	400	400	2000	100	70	100	70	240	802
400×230	400	230	2000	100	60	100	60	170	647
400×500	400	500	2000	100	70	100	70	280	875
450×450	450	450	2000	105	75	105	70	260	949
500×500	500	500	2000	110	80	110	80	280	1101
600×600	600	600	2000	120	90	120	80	330	1437
700×700	700	700	2000	120	100	120	100	235	1749
800×800	800	800	2000	120	100	120	100	260	1960
900×900	900	900	2000	130	110	130	100	290	2388
1000×1000	1000	1000	2000	130	110	130	100	315	2619



ボックス敷き板



呼び名	寸法 (mm)			参考重量 (kg)
	B	L	T	
250用	610	2000	100	293
300用	660	2000	100	317
350用	750	2000	100	360
400用	800	2000	100	384
450用	850	2000	100	408
500用	900	2000	100	432
600用	1060	2000	100	509
700用	1160	2000	100	557
800用	1260	2000	100	605
900用	1360	2000	100	653
1000用	1460	2000	100	701